

HFSS v8.1 Tool - Release Notes

Title	HFSS v8.1.0.11
Release date	Oct, 2025
Tool Version	8.1.0.11
FW Version	7.0.0.21
OS Supported	Windows 10, Windows 11

Changes Overview:

1. Supports New firmware 7.0.0.21
2. Supports upcoming panel Variants 6808U, 6820U, IFP-300U and IFP-1100U.
3. Single Sign on Support with other CLSS connected tools.
4. Refresh token to extend the offline token expiry to 90 days.
5. Tool supports conversion of panels
 - 6808 -> 6808U
 - 6820 -> 6820U
 - IFP-300 -> IFP-300U, IFP2100, IFP1100U
 - IFP-2100 -> IFP1100U
 - FCP-300 -> FCP-300U
6. New product keys have been introduced from v8.1 onwards.
7. Repair for report generation.

Previous Releases

HFSS v8.0 Tool - Release Notes

Title	HFSS v8.0.21.10 Patch
Release date	05 th Nov 2024
Tool Version	8.0.21.10
FW Version	7.00.16

Changes Overview:

Special characters have been restricted in the build v8.0.21.10 with only few exceptions (underscore, space, dot, backslash, hyphen, and @). As per the customer use case, all the imposed restrictions have been removed in this patch.

Because we were allowing only few character sets, automatically Copy and Paste was restricted. But in this patch, it will be allowed.

Impact Area:

1. Edit SBUS Module Name
2. Edit Zone and Group names
3. Report Generation
4. Customer Details
5. Panel Banner
6. Device Label

Note: This patch is applicable to only HFSS v8.0.21.10 and once installed, can not be uninstalled.

HFSS v8.0 Tool - Release Notes

Title	HFSS v8.0.21.10
Release date	September, 2024
Tool Version	8.0.21.10
FW Version	7.00.16

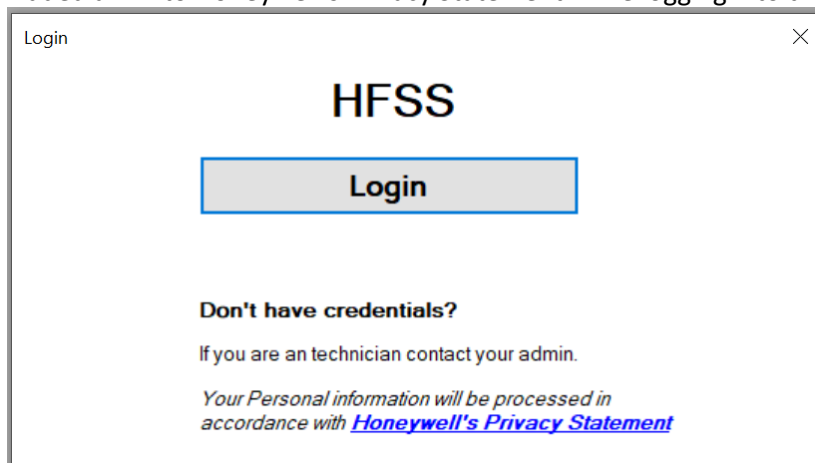
Changes overview:

1. Fixed an Issue where spaces were not allowed in device descriptions.

Title	HFSS v8.0.21.0
Release date	September, 2024
Tool Version	8.0.21.0
FW Version	7.00.16

Changes overview:

2. All 20 user profiles passwords can be fetched from the tool by providing current Admin 1 Password.
3. Along with user profile passwords, current Computer Access Number will also be fetched.
4. User can modify any of the User Profile passwords along with Computer Access Number and submit back to the panel.
5. Fire Fighter key passcode can't be changed.
6. Upon setting the password, panel will enable the user profile if it is disabled. Similarly, removing the password would disable the user profile in the panel.
7. Added a link to Honeywell's Privacy Statement while logging into the tool



8. Minor Bug fixes

Note:

1. HFSS Tool has introduced one additional password restriction rule (doesn't allow for 3 consecutive numbers) compared to the rules supported by the panel. The content of the panel password from the manual is pasted below

9.2.1 Panel Login Menu

After pressing ENTER, and 1 for the login menu, a screen will prompt for the type of access account, Administrator or User. An administrator has the ability to modify user accounts and view the cybersecurity log. The User account has access to panel programming.

Admin Profiles

After initial power-up, the IFP-2100 requires a password change and user account setup before programming. Only Admin1 will be active. Using the login for Admin1, the default password (0000000) must be changed to a new, unique password. This new password must be 7-digits and cannot be sequential or easily guessed. If the password is not changed, a default password trouble will appear on the panel.

There is a maximum of two administrator profiles available. After the administrator account is set up, you must create a User account(s). Only a User account has the ability to program the control panel. There is a maximum of 18 User accounts available.

2. HFSS Tool is not packaging SAP Crystal Report runtime with the tool. Please follow the below steps to download and install in the system where HFSS is installed.

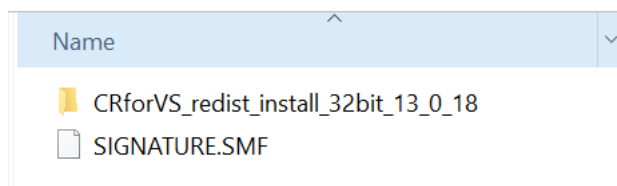
a. Please open the link in the browser and it will download the zip file.

<https://origin-az.softwaredownloads.sap.com/public/file/0020000000665452019>

Your zip file name will be like "CRVS2010CR3218_0-10010309.ZIP"

b. Extract the files from the above zip file

c. Extracted files will have a folder and a file. Screenshot below

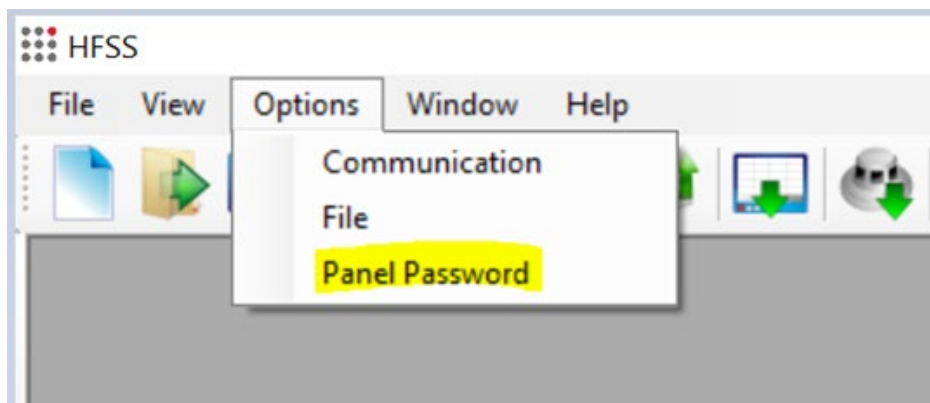


d. The folder "CRforVS_redist_install_32bit_13_0_18" has a file "CRRuntime_32bit_13_0_18.msi"

e. Run the "CRRuntime_32bit_13_0_18.msi" to install the supported Crystal Report runtime.

Instructions for new password change process:

While connected to panel, select 'Panel Password' in Options menu:



Window opens asking user to enter.

- Current Computer access #
- Current Computer Code
- Current Admin1 password

View/Modify Passwords

Fetch Passwords

Current Computer Access # Current Computer Code Current Admin1 Password

Profile Passwords

Profile1 - Fire Fighter's Key	<input type="text"/>	Profile8 - User 8	<input type="text"/>	Profile15 - User 15	<input type="text"/>
Profile2 - Installer	<input type="text"/>	Profile9 - User 9	<input type="text"/>	Profile16 - User 16	<input type="text"/>
Profile3 - Multi-Site Installer	<input type="text"/>	Profile10 - User 10	<input type="text"/>	Profile17 - User 17	<input type="text"/>
Profile4 - User 4	<input type="text"/>	Profile11 - User 11	<input type="text"/>	Profile18 - User 18	<input type="text"/>
Profile5 - User 5	<input type="text"/>	Profile12 - User 12	<input type="text"/>	Profile19 - Admin #1	<input type="text"/>
Profile6 - User 6	<input type="text"/>	Profile13 - User 13	<input type="text"/>	Profile20 - Admin #2	<input type="text"/>
Profile7 - User 7	<input type="text"/>	Profile14 - User 14	<input type="text"/>	New Computer Access #	<input type="text"/>

Note : Modified passwords will be updated in the panel.

- Once user clicks Get Panel Password then values are sent to panel.
- Panel FW will check existing admin 1 password and Computer codes to match with those sent by tool.
- Panel sends the existing passwords to the tool. Once the values are received then all the existing values are shown in the text box given and Set Panel Passwords button and View User Profile Passwords will be enabled.

View/Modify Passwords

Fetch Passwords

Current Computer Access # Current Computer Code Current Admin1 Password

Profile Passwords

Profile1 - Fire Fighter's Key	<input type="text" value="0"/>	Profile8 - User 8	<input type="text"/>	Profile15 - User 15	<input type="text"/>
Profile2 - Installer	<input type="text" value="1357910"/>	Profile9 - User 9	<input type="text"/>	Profile16 - User 16	<input type="text"/>
Profile3 - Multi-Site Installer	<input type="text" value="6543210"/>	Profile10 - User 10	<input type="text"/>	Profile17 - User 17	<input type="text"/>
Profile4 - User 4	<input type="text"/>	Profile11 - User 11	<input type="text"/>	Profile18 - User 18	<input type="text"/>
Profile5 - User 5	<input type="text"/>	Profile12 - User 12	<input type="text"/>	Profile19 - Admin #1	<input type="text" value="1357910"/>
Profile6 - User 6	<input type="text"/>	Profile13 - User 13	<input type="text"/>	Profile20 - Admin #2	<input type="text"/>
Profile7 - User 7	<input type="text"/>	Profile14 - User 14	<input type="text"/>	New Computer Access #	<input type="text"/>

Note : Modified passwords will be updated in the panel.

- User can view or modify any of the passwords. If user doesn't change any value, the same value will be retained.
- Disabled profiles will have blank fields
- Upon clicking Set Panel Passwords button, the tool checks the passwords against the password rules.
- If rules are not followed, error message pops up to alert the user.
- Once all the validations are done, tool sends the updated values to panel.
- Panel FW will change the password if all the validations go through.
- Panel FW sends 'Success' / 'Failure' to HFSS
- HFSS shows success or failure message.

Release 8.0.11.0

Title	HFSS v8.0 Tool
Release date	26 th Mar 2024
Tool Version	8.0.11.0
FW Version	7.00.12

Changes overview:

1. NVCM module is not available for 6820 EVS panel type while adding SBUS modules.
2. NVCM module is now being supported for 6820 EVS panel.
3. SKSS Importer changes to convert VCM to NVCM while importing -
 - a. 5820 EVS files to 6820 EVS
 - b. IFP 100 files to IFP 300
 - c. IFP 1000 files to IFP 2100

Impact Area:

1. Configuration changes while adding SBUS modules for 6820EVS panel types.
2. SKSS Importer for 5820EVS, IFP100 and IFP1000 panel types.

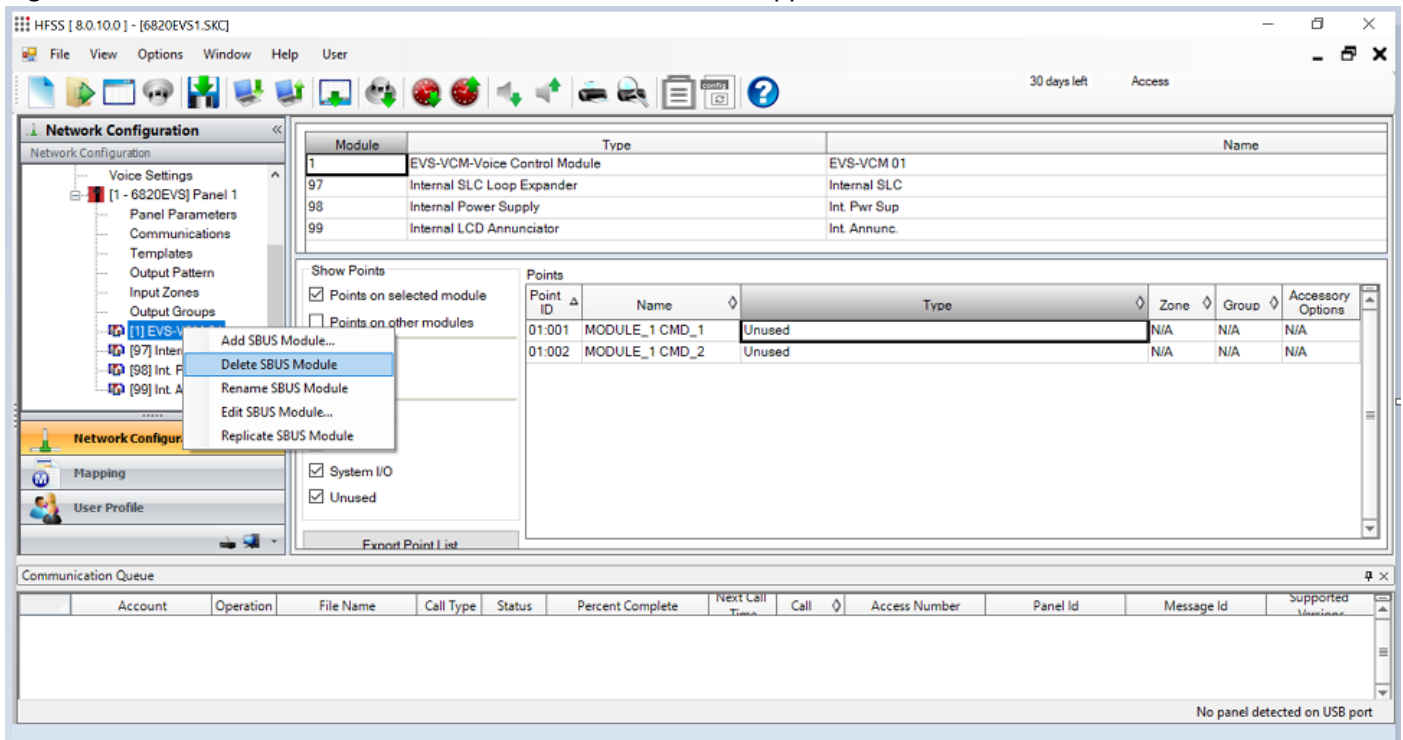
Steps to replace NVCM with VCM:

Tool allows either VCM or NVCM to be added for a panel. If VCM is already added, then user must delete it and add NVCM to the panel.

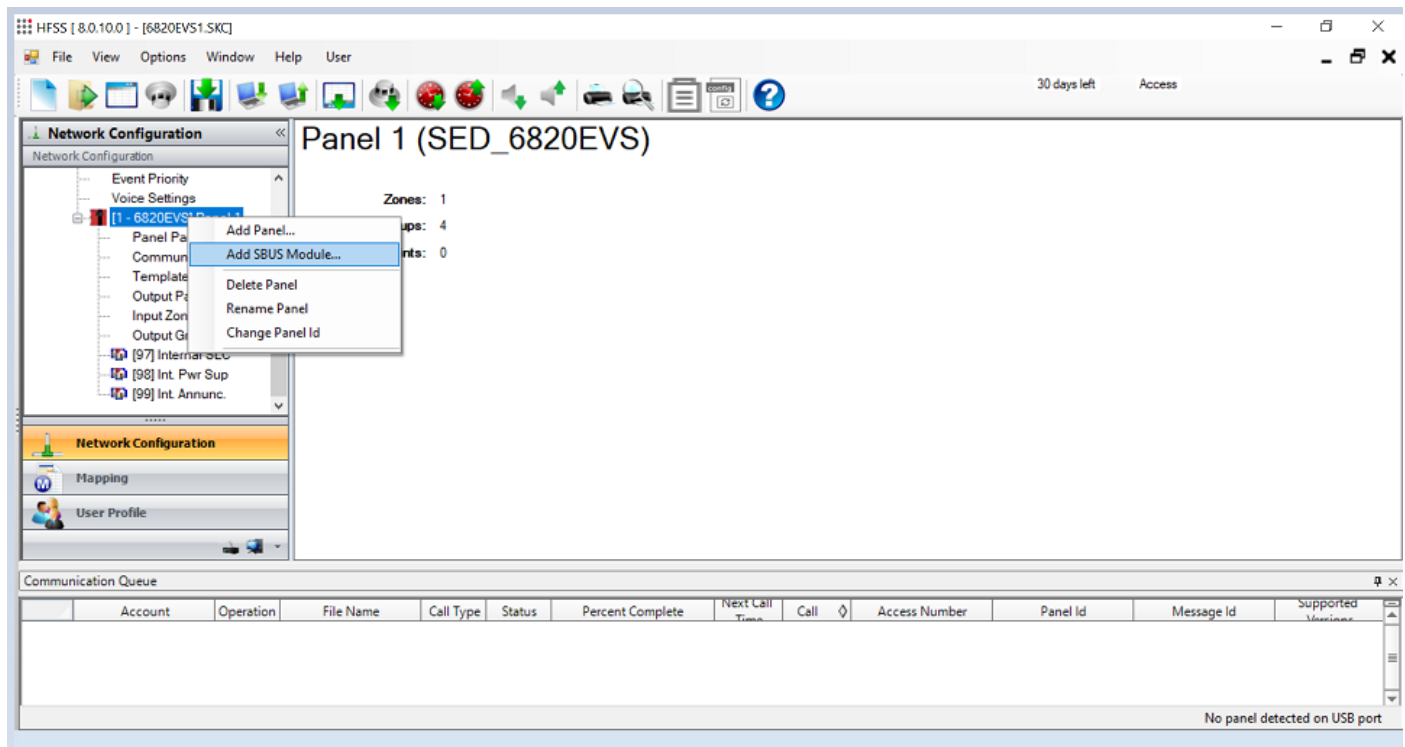
Note: The current VCM configuration will be lost. User must redo the configuration post adding the NVCM.

1. Delete the existing VCM configured in the tool.

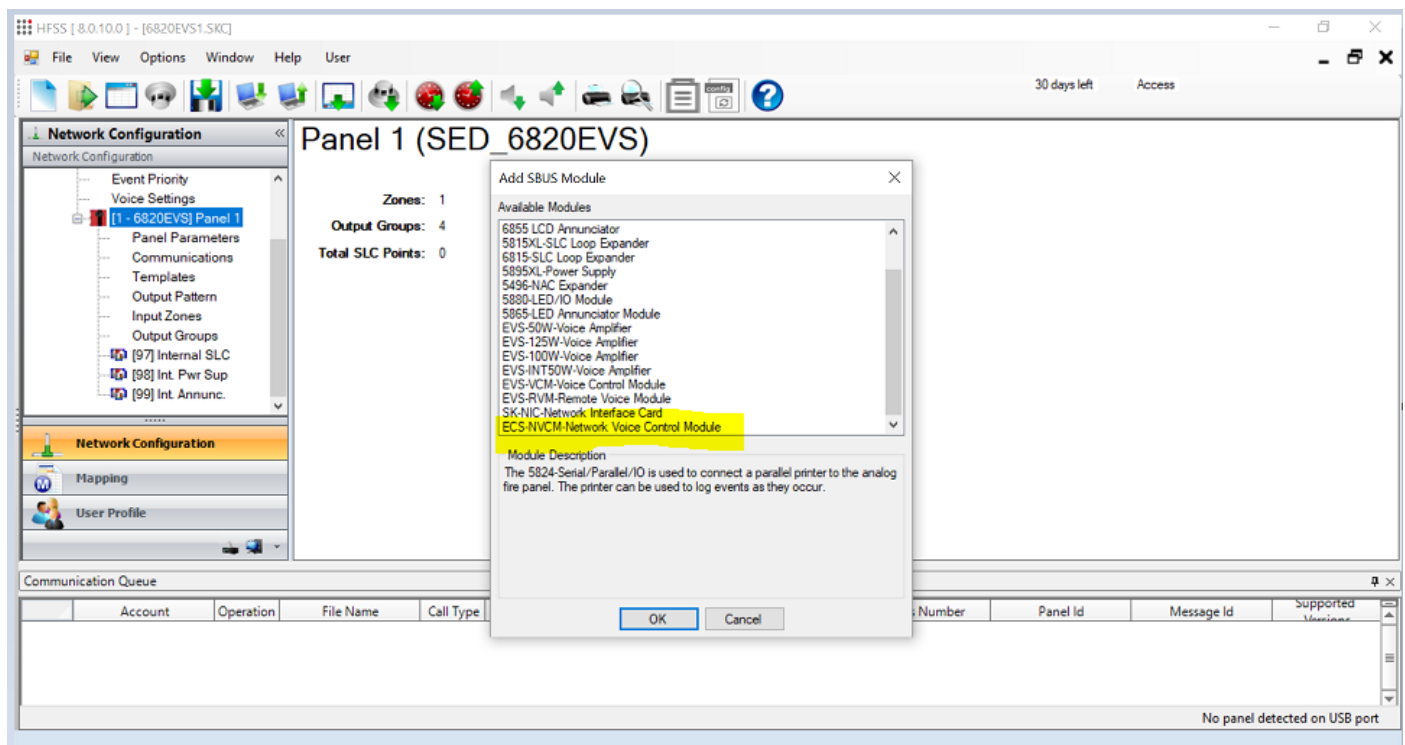
Right click on EVS-VCM-Voice Control Module -> context menu appears -> Click on Delete SBUS Module.



2. Add the NVCM to the panel
 - Right click on panel node -> context menu appears -> Click on Add SBUS Module



- Add SBUS Module popup appears. -> Select “ECS-NVCM-Network Voice Control Module” -> Click Ok



Release 8.0.0.0

Title	HFSS v8.0 Tool
Release date	5 th Jan 2024
Tool Version	8.0.0.0
FW Version	7.00.xxx

Changes overview:

1. User can change the existing internal annunciator between smaller and new larger display for 6808 and 6820 type panels.
2. SKSS Importer changes to set large display to 6808 and 6820 panel types.
3. Migrated codebase to Dot Net Framework 4.8
4. Tool versioning has been changed from last version 7.0.370.0 (QA released) to 8.0.0.0.

Impact Area:

1. Configuration changes to 6808 and 6820 panel types.
2. SKSS Importer for 5808 and 5820 panel types.

Release 7.0.350.0

Title	HFSS v7.0 Tool
Release date	1 st Aug 2023
Tool Version	7.0.350.0
FW Version	7.00.07

Changes overview:

1. Defect fixes

Impact Area:

1. Get and Set Config with 6820 and 6808 panel with small and larger displays.
-

Release 7.0.340.0

Title	HFSS v7.0 Tool
Release date	1 st Jun 2023
Tool Version	7.0.340.0 Build
FW Version	7.00.xxx

1. Defect fixes

Impact Area:

1. SKSS Importer

Defects fixed:

SI No	Description
1	Unable to download the SKSS Imported database (IFP2000) --> (IFP2100) via HFSS Tool v7.0.310
2	SKSS Importer - IFP1000 to IFP2100 converted file - relay properties are getting differed and able to configure Module properties in relay circuit
3	In All Protocol when creating the detectors is auto-assigned to Modules for the First Time Configuring it in HFSS v7.0.330
4	SKSS Importer - IFP1000 to IFP2100 converted file - Internal SLC M97 and MXX SLC Loop Expander Module properties are in disabled state

Release 7.0.320.0

Title	HFSS v7.0 Tool
Release date	24 th April 2023
Tool Version	7.0.320.0 Build
FW Version	7.00.xxx

Changes overview:

1. Defect fixes

Impact Area:

1. SKSS Importer to test IFP2000

Defects Fixed:

Sl No	Description
1	Unable to download the imported database (HFSS v3.6.140) to Networked IFP series FA panels via HFSS Tool v7.0.310
2	Unable to download the SKSS Imported database (IFP2000) --> (IFP2100) via HFSS Tool v7.0.310
